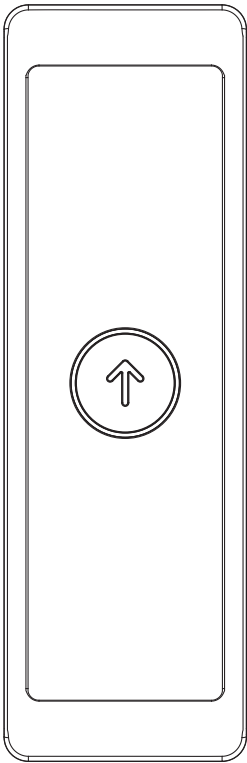




Materials used		
Face plate	stainless steel AISI 304, thickness 0,8mm	
Mount plate	stainless steel AISI 430, thickness 0,8mm	
Indicator lens	Polycarbonate	
Push button	Body	Polyamide 6
	Fixing locks	ABS

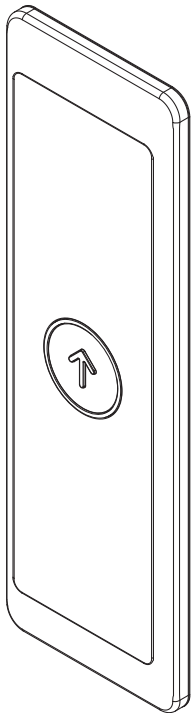
Available finishes			
	Silver brushed(standard)		Silver mirror
	Gold brushed		Gold mirror
	Bronze brushed		Bronze mirror
	Champagne brushed		Champagne mirror
	Black brushed		Black mirror



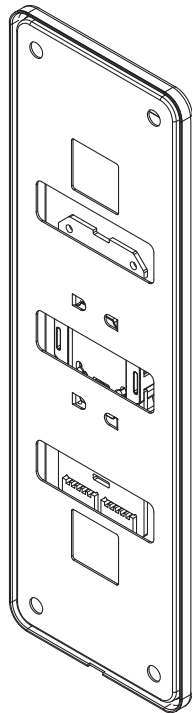
Front view



Side view



Isometric front view



Isometric back view

Materials

Faceplate	brushed AISI 304L stainless steel
Mountplate	AISI 430 stainless steel
Button body	polyamide
Display Lens	-

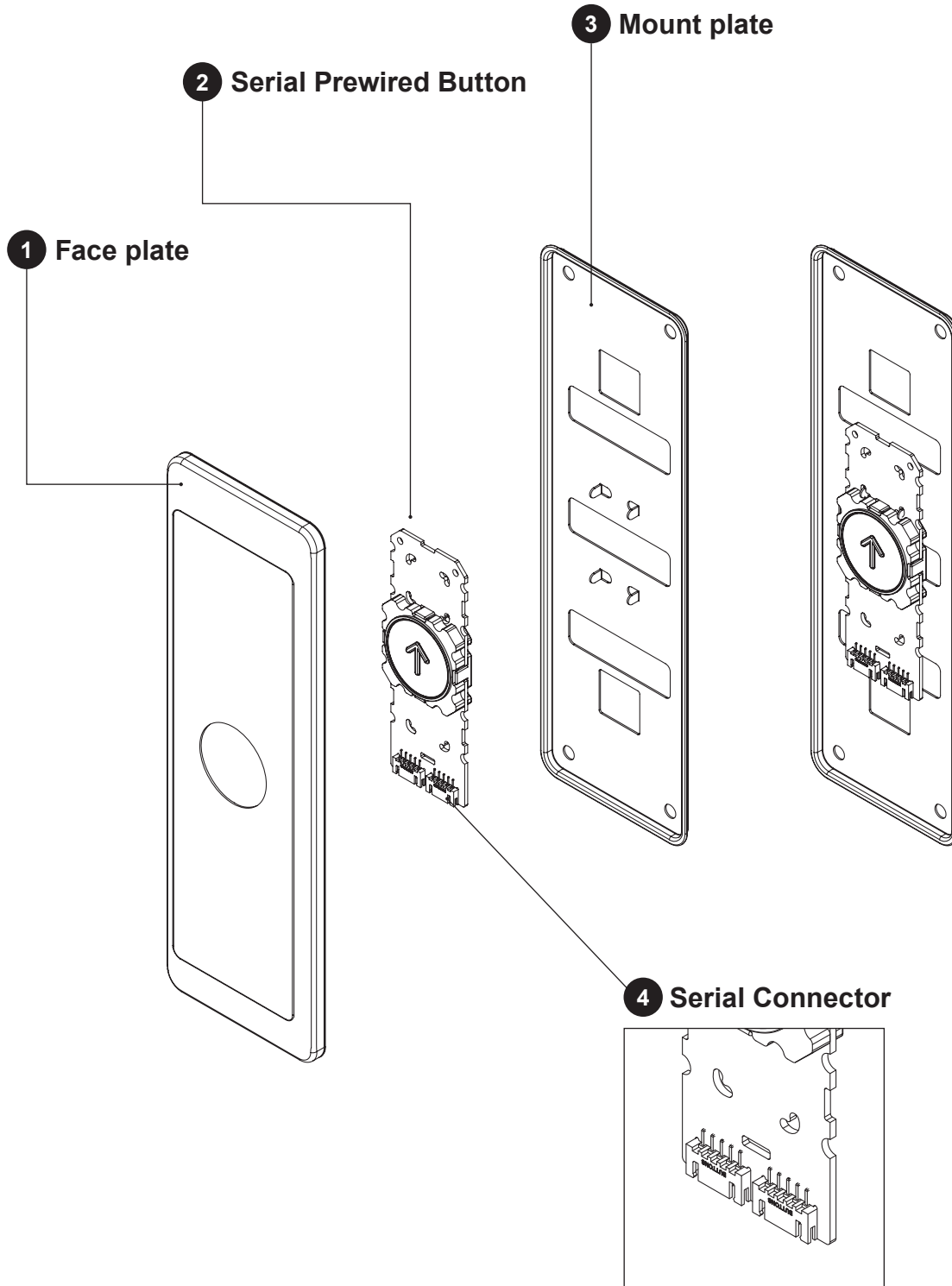
Technical details

push plate	304 Grade Brushed plate
chassis	Translucent plastic
chassis lock	ABS plastic
PCB	high quality PCB

Dimensions

Width	80mm
Height	250mm
Depth	9,9mm

Components



Serial prewired connection block diagram

